

E3 Metals Outlines its Aquifer Management Plan and Increases its Inferred Lithium Resource

CALGARY, AB, Nov. 24, 2020 /CNW/ - E3 METALS CORP. (TSXV: ETMC) (FSE: OU7A) (OTC: EEMMF) (the "Company" or "E3 Metals"), an emerging lithium developer and leading lithium extraction technology innovator, is pleased to announce its Aquifer Management Plan and resource increase, in conjunction with the recently announced PEA (see news release dated November 16, 2020), on the Clearwater Lithium Project.

Updated Resource Estimate

The inferred mineral resource estimate for the Clearwater Project Area has been updated to 410,000 tonnes of elemental lithium. The updated resource now totals 2,200,000 tonnes of lithium carbonate equivalent (LCE), from 1,900,000 tonnes LCE, with E3 Metals now holding 7.0Mt LCE inferred mineral resources. It is reasonably expected that the majority of the Inferred Mineral Resource Estimate could be upgraded to Indicated Mineral Reserves with continued exploration. In 2021, E3 has an expanded geological program planned that leverages decades of existing oilfield data to support E3's goal of upgrading the Company's Clearwater resource.

Several factors contributed to the updated estimate, including:

1. An updated Aquifer Management Plan, including well network modeling, has outlined the ability for the reservoir to produce a larger amount of lithium from brine than was originally envisioned, increasing the production factor from 50% to 80% in some areas;
2. New Permits resulted in an expansion of the resource area by 85 km² in comparison to the initial resource estimate in 2017; and
3. New and repeated sampling within the resource area has resulted in an updated average concentration of 74.6 mg/L Li.

Production Plan

In order to produce lithium products, brine from the Leduc Aquifer will be pumped to surface from a series of production wells operating at approximately 3,300 m³/day using electric submersible pumps. A group of wells will be located at two brine production areas, located to the north and south of the Central Process Facility (CPF), each producing just over 64,000 m³/day (Figure 1). Additional wells have been planned and included in the cost estimate for redundancy purposes. From there, the brine will be transported through underground pipelines, each about 15 km in length, to the CPF for pre-treatment and lithium extraction using E3's proprietary Direct Lithium Extraction (DLE) process. After the lithium is removed, the brine will be re-injected back into the aquifer through a series of wells located in proximity to the CPF.



Figure 1: Proposed brine production and injection schematic (CNW Group/E3 Metals Corp.)

Aquifer Management Plan

An Aquifer Management Plan (AMP) is an essential step to promoting resource longevity. Starting with an understanding of the aquifer's natural geological characteristics, the long-term behaviour and movement of the brine in the subsurface is modelled while leveraging the aquifer's key advantages. These include the reservoir characteristics (or the ability for brine to flow within it) and size and of the Leduc Aquifer, which spans 100's of km².

Building upon this, E3 Metals has developed the Clearwater Project Area Aquifer Management Plan after analyzing 60+ years of oil, gas and brine production across the project area. This includes geological data, production data, and geophysical data, including wireline logs, to characterize the aquifer. Based on the aquifer characterization, an aquifer model was developed to predict the movement of fluid and lithium in the reservoir during the project life.

The production and injection plan outlined above results in a pressure differential that effectively sweeps the production area of lithium enriched brine from the injection wells to the production wells. Figure 2 displays the modelled lithium distribution after 10 years and 20 years of production. The Aquifer Management Plan and associated modelling can support E3 to efficiently manage fluid flow and mixing patterns in the subsurface aquifer to extend the resource life across the Clearwater Project Area.

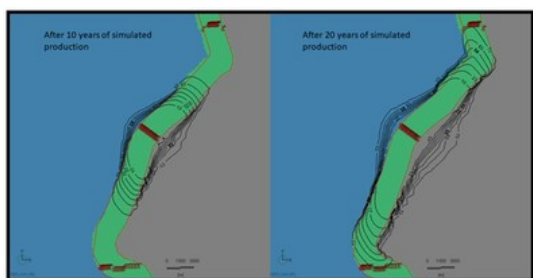


Figure 2: Reservoir modelling of lithium concentration (mg/L) after 10 and 20 years based on an average annual production rate of 128,800 m³/day (CNW Group/E3 Metals Corp.)

"I am very pleased to see this advancement of E3's inferred resource estimation in association with the release of our PEA results", stated Liz Lappin, E3's VP Corporate Affairs and Exploration, "As we move into the new year, we plan to continue to advance the aquifer development program with the goal of upgrading the resources to Measured and Indicated."

E3's Clearwater resource is classified as inferred because geological evidence is sufficient to imply but not verify geological, grade or quality continuity. Lithium Carbonate Equivalent (LCE) is calculated by multiplying the elemental lithium contained within the resource by 5.323.

About E3 Metals

E3 Metals is a lithium development company with 7.0 million tonnes of lithium carbonate equivalent (LCE) inferred mineral resources¹ in Alberta. E3 Metals is currently advancing its proprietary direct lithium extraction (DLE) process in partnership with Livent Corporation, a global leader in lithium production, under a joint development agreement. Through the successful scale up its DLE process towards commercialization, E3 Metals' goal is to produce high purity, battery grade, lithium products. With a significant lithium resource and innovative technology solutions, E3 Metals has the potential to deliver lithium to market from one of the best jurisdictions in the world. E3 Metals also continues to work with partners at the University of Alberta and at GreenCentre Canada. For more information about E3 Metals, visit <http://www.e3metalscorp.com>.

ON BEHALF OF THE BOARD OF DIRECTORS,

"Chris Doornbos"

President & CEO
E3 METALS CORP.

1. E3 Metals has released information on three NI 43-101 Technical Reports totaling a resource of 7.0 Mt LCE. The Central Clearwater Resource Area (CCRA) Technical Report, identifying 1.9 Mt LCE (inferred), is dated effective October 27, 2017, and the North Rocky Resource Area (NRRRA) Technical Report was dated effective October 27, 2017, identifies 0.9 Mt LCE (inferred). A third report for the Exshaw West Resource Area (EWRA), identifies 3.9 Mt LCE (inferred) and was filed on June 15, 2018, effective June 4, 2018. All reports are available on SEDAR (www.sedar.com).

Neither the TSX Venture Exchange nor its Regulation Services Provider (as that term is defined in the policies of the TSX Venture Exchange) accepts responsibility for the adequacy or accuracy of this release.

This news release includes certain forward-looking statements concerning the potential of the Company's projects and technology, as well as management's objectives, strategies, beliefs and intentions. Forward looking statements are frequently identified by such words as "may", "will", "plan", "expect", "anticipate", "estimate", "intend" and similar words referring to future events and results. Forward-looking statements are based on the current opinions and expectations of management. All forward-looking information is inherently uncertain and subject to a variety of assumptions, risks and uncertainties, including the speculative nature of mineral exploration and development, fluctuating commodity prices, the effectiveness and feasibility of emerging lithium extraction technologies which have not yet been tested or proven on a commercial scale or on the Company's brine, competitive risks and the availability of financing, as described in more detail in our recent securities filings available at www.sedar.com. Actual events or results may differ materially from those projected in the forward-looking statements and we caution against placing undue reliance thereon. We assume no obligation to revise or update these forward-looking statements except as required by applicable law.

SOURCE E3 Metals Corp.

View original content to download multimedia:

<http://www.newswire.ca/en/releases/archive/November2020/24/c3574.html>

%SEDAR: 00011471E

For further information: Please contact investor@e3metalscorp.com

CO: E3 Metals Corp.

CNW 03:05e 24-NOV-20